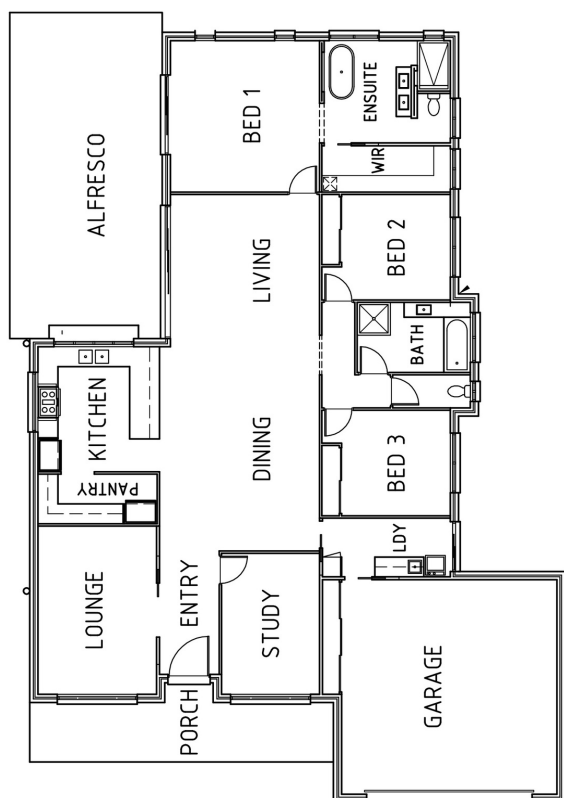


The Orchid

3  1  2 



BlueGecko
— H O M E S —



Features

Separate Media
Family
Dining
Separate w/c

Large walk in robe
Ensuite
Alfresco
Porch

Floor Areas

Living (Inc. Garage)	261.2m ²
Porch	17.4m ²
Alfresco	37.1m ²
Total Area:	315.7m²

Phone: 1300 962 438

Masters Builders Lic: 15084648
QBCC licence 15084648
QBCC licence 1179153
ABN: 84 624 365 153

Email: sales@bluegeckohomes.com.au
www.bluegeckohomes.com.au
PO Box 502, Hervey Bay DC

© Blue Gecko Homes. Plans and facades are artists impressions only and are not drawn to scale. Dimensions, room sizes and areas may vary.